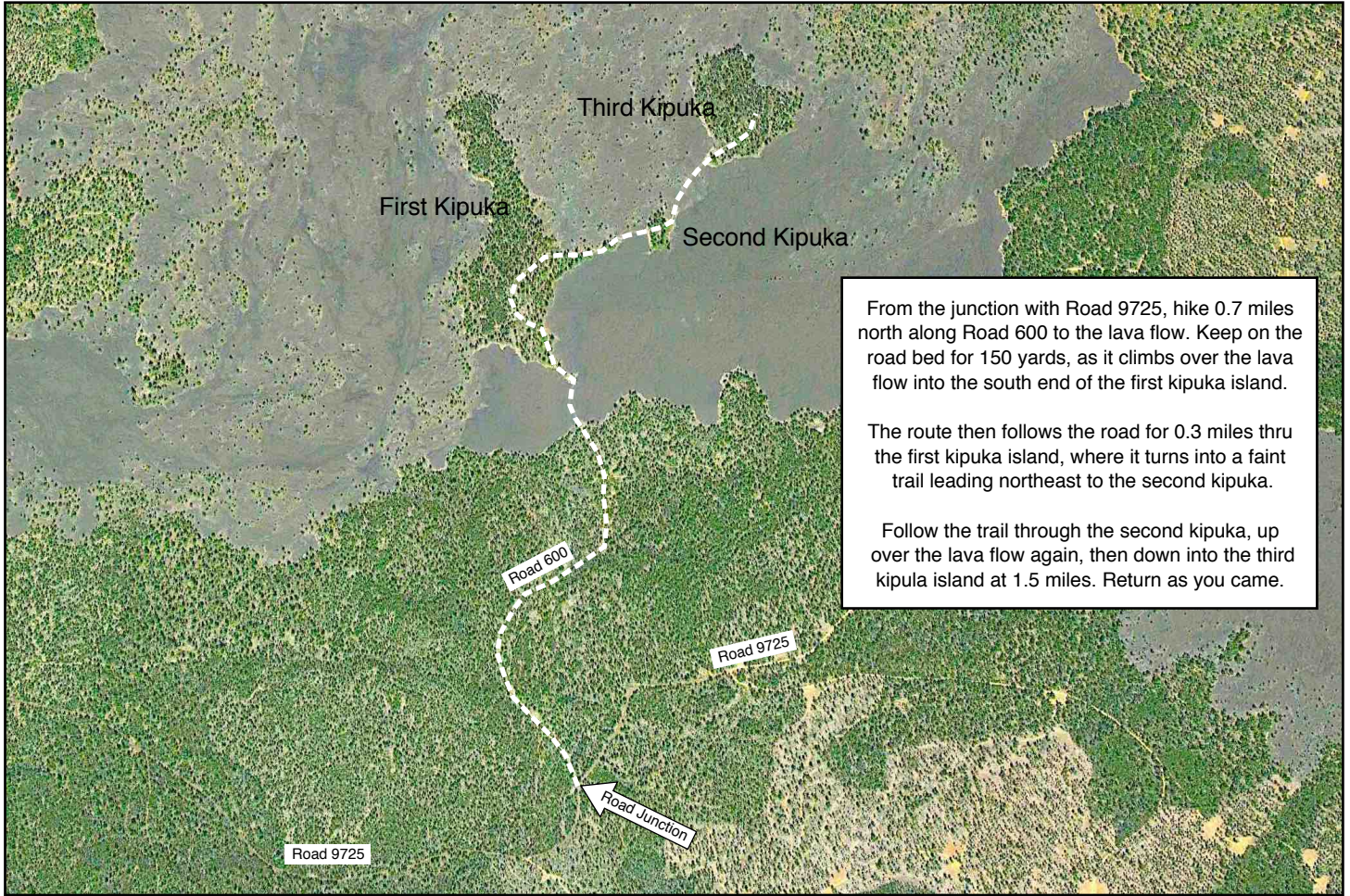


**Travel Map to
THREE KIPUKA ISLANDS HIKE**

Traveling south on Hwy 97, drive 3.0 miles past the Vandervert Road turnoff. Nearing the end of the passing lane on the highway, look for a break in the double yellow line. Turn left (east) here onto unsigned gravel Forest Road 9725.

Bearing left at all major road junctions, drive 4.8 miles on Road 9725 to the junction with Road 600 on the left. Park off the road at this road junction.

Forest Road 9725 is a good, all-weather gravel track, passable by any vehicle with care.



From the junction with Road 9725, hike 0.7 miles north along Road 600 to the lava flow. Keep on the road bed for 150 yards, as it climbs over the lava flow into the south end of the first kipuka island.

The route then follows the road for 0.3 miles thru the first kipuka island, where it turns into a faint trail leading northeast to the second kipuka.

Follow the trail through the second kipuka, up over the lava flow again, then down into the third kipuka island at 1.5 miles. Return as you came.