

**Travel Map to  
PAULINA CREEK FLOOD FEATURES**

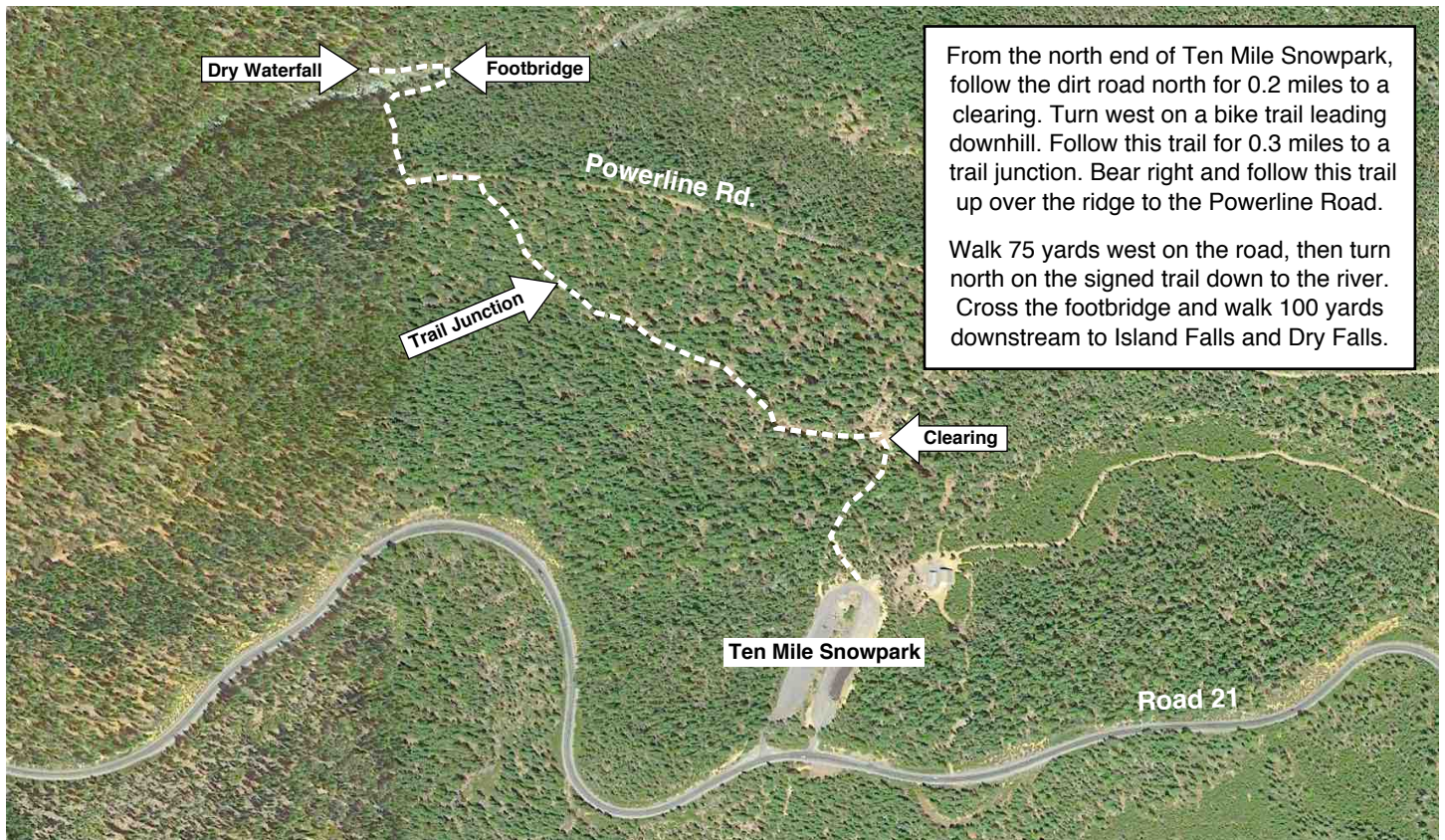
From Bend, OR, drive 23.5 miles south on Highway 97, then turn east on the signed Paulina Lake Road (aka County Road 21).

**Giant Gravel Bars:** Pull into the trailhead parking area for the Peter Skene Ogden Trail near the Ogden Group Camp. Walk upstream along north side of the creek for 250 yards, on informal trails winding over and along the gravel bars.

**Dry Waterfall:** See map below for 1.6-mile roundtrip hike.

**Migrating Falls:** Pull into the day use parking area at Paulina Falls. Take either the direct trail to the falls, or follow a switchbacking trail downstream for better views.

**Wave-cut Terraces:** Turn on the road to the Little Crater Campground and drive to the trailhead at road's end.



From the north end of Ten Mile Snowpark, follow the dirt road north for 0.2 miles to a clearing. Turn west on a bike trail leading downhill. Follow this trail for 0.3 miles to a trail junction. Bear right and follow this trail up over the ridge to the Powerline Road.

Walk 75 yards west on the road, then turn north on the signed trail down to the river. Cross the footbridge and walk 100 yards downstream to Island Falls and Dry Falls.