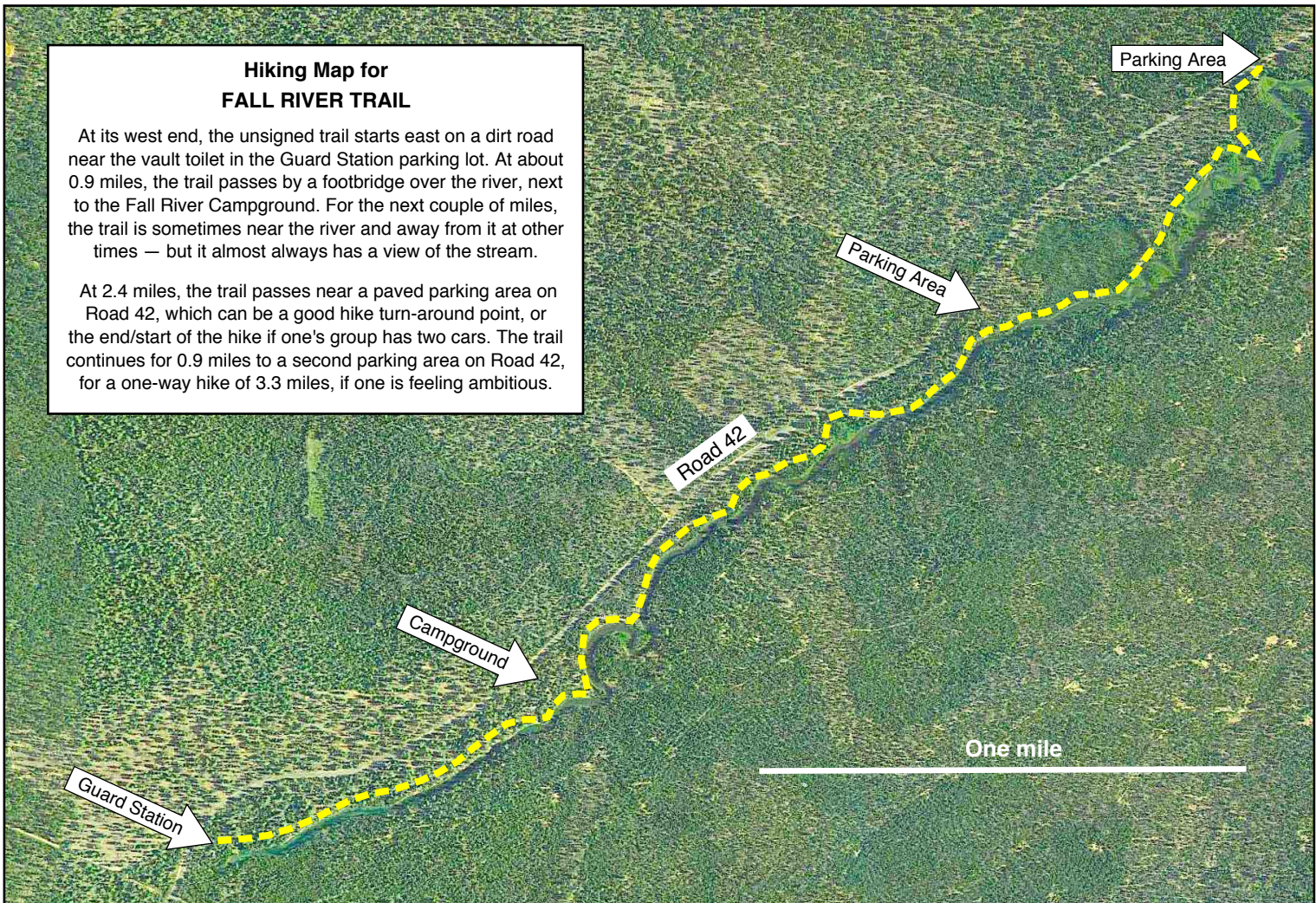


Road Map to FALL RIVER TRAIL

About 16 miles south of Bend on Hwy 97 (or about 13 miles north of LaPine), turn west on Vandever Road. Drive 1 mile west to a "T" intersection. Turn left (south) and drive 0.9 miles to the turnoff for South Century Drive (Road 42) on the right.

Follow Road 42 for 9.7 miles to the Fall River Guard Station, just 0.75 road miles past the Fall River Campground.



Hiking Map for FALL RIVER TRAIL

At its west end, the unsigned trail starts east on a dirt road near the vault toilet in the Guard Station parking lot. At about 0.9 miles, the trail passes by a footbridge over the river, next to the Fall River Campground. For the next couple of miles, the trail is sometimes near the river and away from it at other times — but it almost always has a view of the stream.

At 2.4 miles, the trail passes near a paved parking area on Road 42, which can be a good hike turn-around point, or the end/start of the hike if one's group has two cars. The trail continues for 0.9 miles to a second parking area on Road 42, for a one-way hike of 3.3 miles, if one is feeling ambitious.