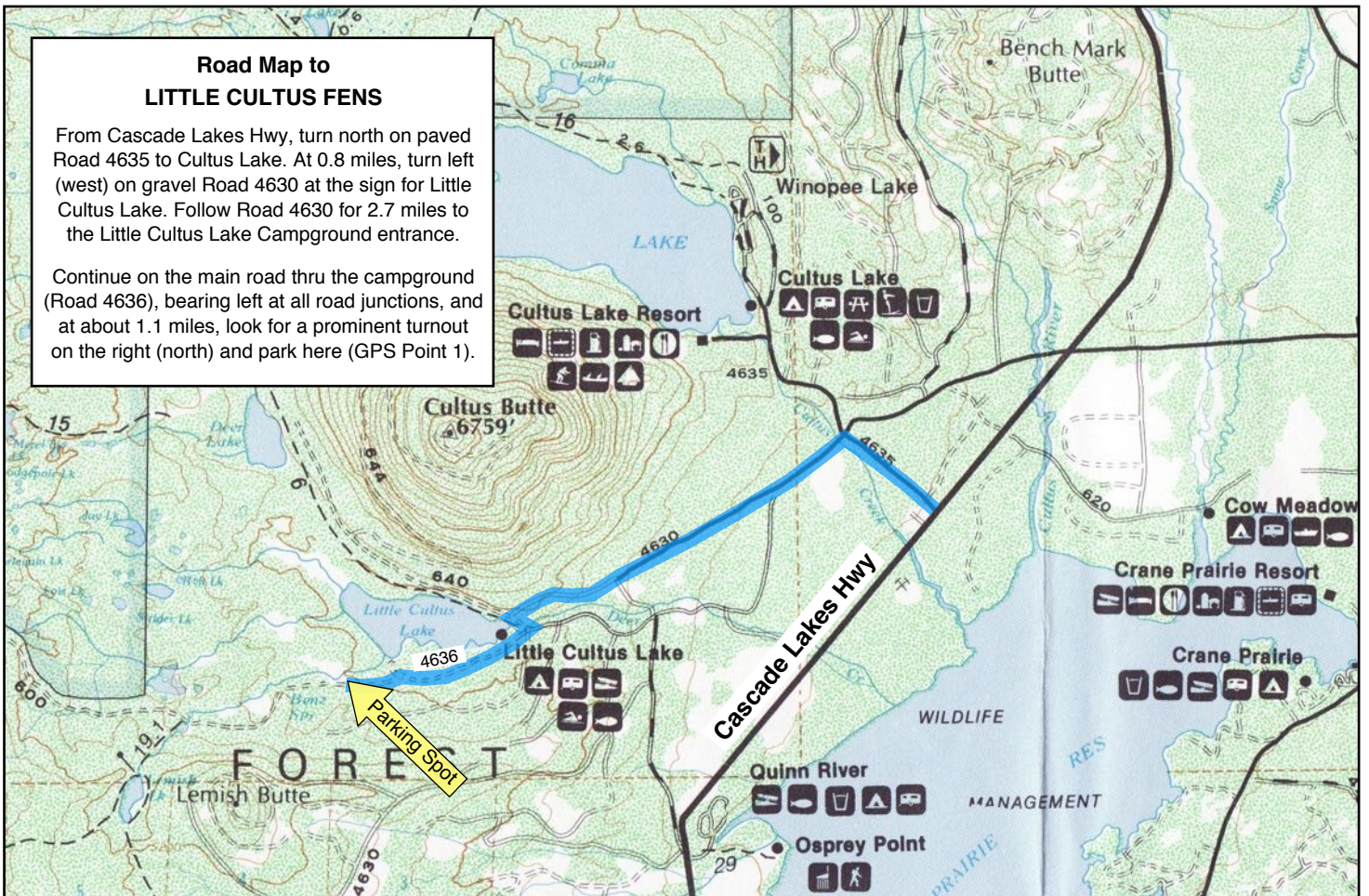


Road Map to LITTLE CULTUS FENS

From Cascade Lakes Hwy, turn north on paved Road 4635 to Cultus Lake. At 0.8 miles, turn left (west) on gravel Road 4630 at the sign for Little Cultus Lake. Follow Road 4630 for 2.7 miles to the Little Cultus Lake Campground entrance.

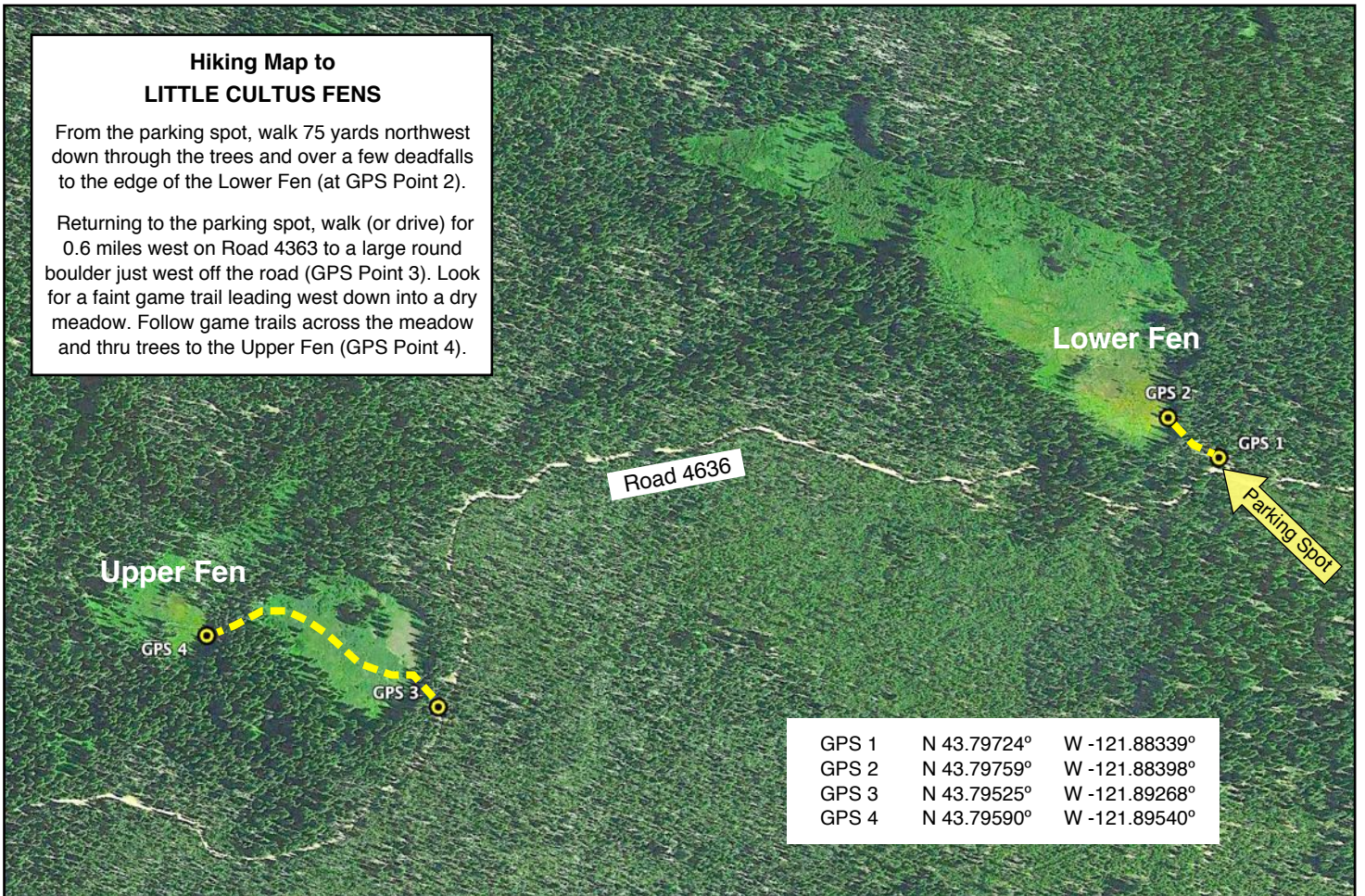
Continue on the main road through the campground (Road 4636), bearing left at all road junctions, and at about 1.1 miles, look for a prominent turnout on the right (north) and park here (GPS Point 1).



Hiking Map to LITTLE CULTUS FENS

From the parking spot, walk 75 yards northwest down through the trees and over a few deadfalls to the edge of the Lower Fen (at GPS Point 2).

Returning to the parking spot, walk (or drive) for 0.6 miles west on Road 4363 to a large round boulder just west off the road (GPS Point 3). Look for a faint game trail leading west down into a dry meadow. Follow game trails across the meadow and thru trees to the Upper Fen (GPS Point 4).



GPS 1	N 43.79724°	W -121.88339°
GPS 2	N 43.79759°	W -121.88398°
GPS 3	N 43.79525°	W -121.89268°
GPS 4	N 43.79590°	W -121.89540°